

## Releasable check valve type RH and DRH

Check valves with hydraulic release are a type of check valve. They block one or both hydraulic consumer lines or are used as a hydraulically actuated drain or circulation valve. In the closed state the check valve type RH and DRH has zero leakage. The type DRH is a twin check valve for double-acting consumers.

The check valve type RH and DRH is available with a hydraulic release. Hydraulic release suppresses relief surges that can occur at high pressure and with a large consumer volume.

### Features and benefits:

- Pressures up to bar
- with hydraulic release for smooth switching

### Intended applications:

- Blocking of leak-free hydraulic cylinders
- Return flow relief
- Hydraulically actuated drain or circulation valve



<b>Nomenclature:</b>	Check valve with hydraulic release or twin check valve
<b>Design:</b>	Individual valve for <ul style="list-style-type: none"> <li>▪ Pipe connection</li> <li>▪ Manifold mounting</li> </ul>
<b>Adjustment:</b>	Hydraulic
<b>p<sub>max</sub>:</b>	700 bar
<b>Q<sub>max</sub>:</b>	160 l/min

### Design and order coding example

RH 3	V	
	<b>Function</b>	Without pre-release (-) With pre-release (V)
<b>Basic type, size</b>		Releasable check valve RH, size 1 to 5

DRH 3 LSS	- 30	/100
	<b>Pre-charge pressure [bar]</b>	
<b>Basic type, size, function</b>	<b>Pressure setting [bar]</b>	Releasable double check valve DRH, size 1 to 5

### Additional versions:

- With pre-release (one or both sides)
- With shock valves (for hydraulic motors)
- With safety valve preventing slow pressure rises
- With leakage port preventing unintended open-up when pressure migrated from the control side
- Manifold mounting version (type DRH3P)

## Function

RH

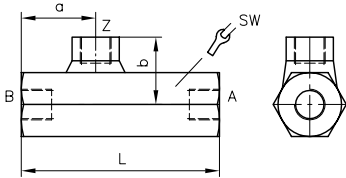


DRH

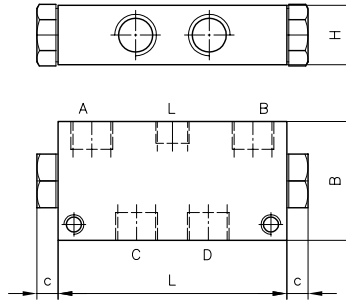


## General parameters and dimensions

RH..



DRH..



	$Q_{max}$ [lpm]	$p_{max}$ [bar]	Release ratio $p_{A(B)}/p_z$	Ports		Dimensions [mm]				m [kg]
				A, B, C, D	Z	L	a	b	SW = a/f	
<b>RH 1</b>	15	700	2.7	G 1/4	G 1/4	84	31.5	27	SW 24	0.4
<b>RH 2</b>	35	700	3	G 3/8		90	32	28.5	SW 27	0.4
<b>RH 3</b>	55	500	2.4	G 1/2		100	36.5	31	SW 32	0.6
<b>RH 4</b>	100	500	2.4	G 3/4		126	45	35.5	SW 41	1.3
<b>RH 5</b>	160	500	3	G 1		143	52	38	SW 46	1.8
						<b>L</b>	<b>B</b>	<b>H</b>	<b>c</b>	
<b>DRH 1</b>	16	500	2.5	G 1/4	-	70	45	20	8	0.5
<b>DRH 2</b>	30	500		G 3/8		89	60	30	10	1.2
<b>DRH 3</b>	60	500		G 1/2		115	60	30	13	1.6
<b>DRH 4</b>	90	400		G 3/4		150	70	40	15.5	2.9
<b>DRH 5</b>	140	400		G 1		195	80	50	17	5.5

### Associated technical data sheets:

- [Releasable check valve type RH: D 6105](#)
- [Releasable twin check valve type DRH: D 6110](#)

### Similar products:

- [Releasable check valve type RHV: D 3056](#)
- Type CRH and RHC: [D 7712](#), [D 7165](#)
- [Releasable check valve type HRP: D 5116](#)